



# SGS INDUSTRIAL SERVICES

Beat In-Albon

Executive Vice President, Industrial Services

Investor Days, 26th-27th May 2011

WHEN YOU NEED TO BE SURE



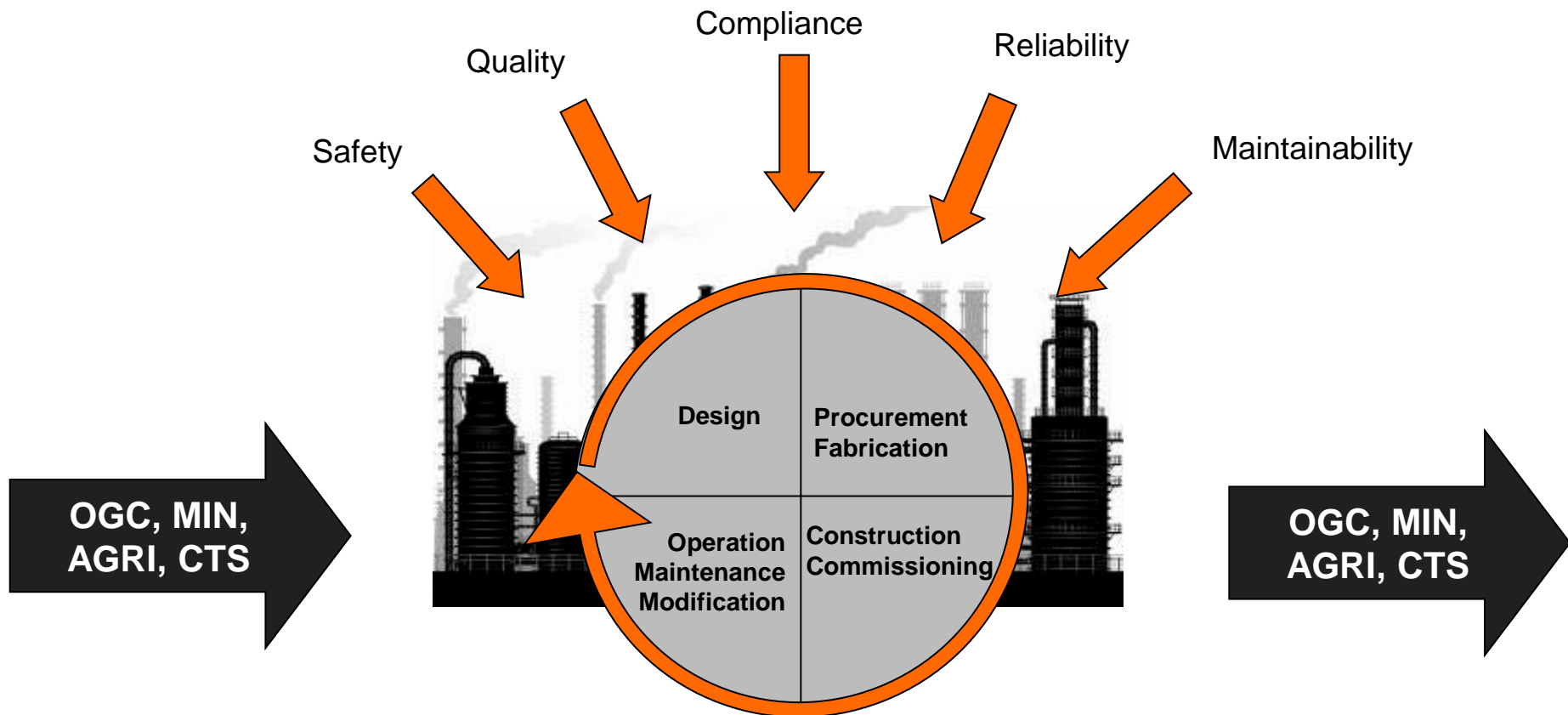
SGS INDUSTRIAL SERVICES MIGHT HAVE **PREVENTED**  
SOME OF THESE INCIDENTS



- INDUSTRIAL Services provides solutions to almost any industrial segment
- INDUSTRIAL Services' people have a **worldwide** presence with high levels of expertise and experience
- INDUSTRIAL Services have **state of the art** tools/equipment to support our experts
- **INCREASE SAFETY AND QUALITY, REDUCE TECHNICAL AND COMMERCIAL RISKS IS THE ROLE OF INDUSTRIAL SERVICES**

## INDUSTRIAL SERVICES: WHAT BUSINESS DOES

**ASSURE ASSET INTEGRITY – FROM DESIGN TO DECOMMISSIONING – ACROSS INDUSTRIES – ALL OVER THE WORLD**



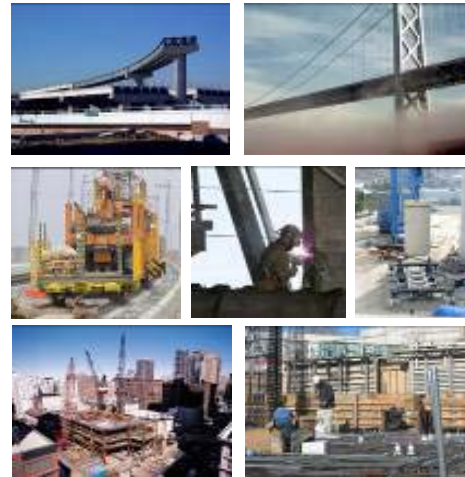
### Oil & Gas



### Power



### Construction



### Transportation



Statutory & Voluntary Inspections

Supply Chain Services

Non Destructive-/Destructive (Laboratory) Material Testing

Asset Integrity Management/RBI

Import / Product Certification

Project Services (due diligence, risk management, project management, -supervision)

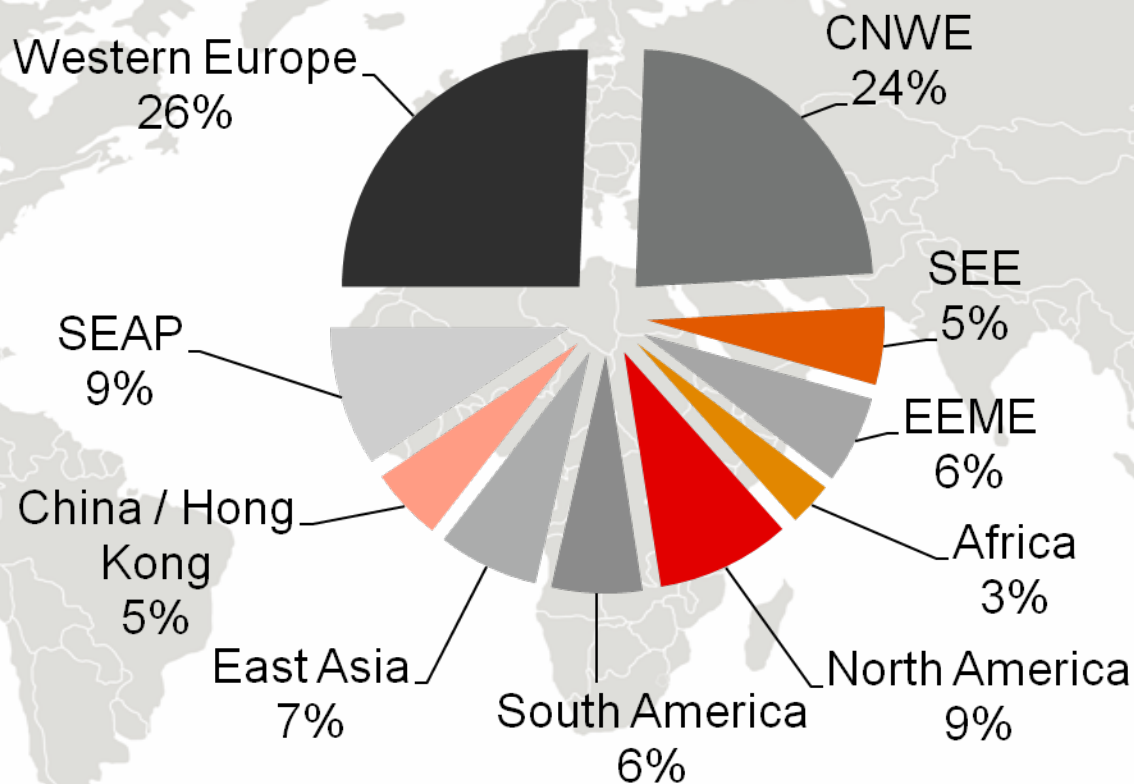
Technical Staffing Services





- Plant Operators / Owners
- EPC Contractors
- Engineering / Consultancy Companies
- Construction Companies
- Fabricators / Suppliers of Technical Components
- Governmental Authorities
- Investors
- Insurers
- Trading Companies

## REVENUE PER REGION (2010)



### OFFSHORE & ONSHORE WIND FARMS EUROPE



### WIND ENERGY TECHNOLOGY CENTER CHINA



### LENDERS POOL BIOETHANOL PROJECT PERU



### INFRASTRUCTURE INDIA



## CASE STUDY

### BIOETHANOL PLANT - PERU



#### ■ PROJECT: BIOETHANOL PLANT

#### ■ SECTOR: Bioethanol – Renewables

#### ■ DESCRIPTION:

- Sugarcane processing mill with a production capacity of approximately 30 million gallons of ethanol per year
- 10,672 hectares of land with water rights for 186 million m3 per year for the development of irrigated sugar cane fields





# CASE STUDY

## BIOETHANOL PLANT - PERU

### SGS Services: Lenders Technical Adviser

#### 1. Technical due diligence / Project review of: (Duration: 6 months)

- Industrial plant, port facility and infrastructure
- Construction Schedule
- Estimated Costs
- Cane productivity assessment, harvesting, water irrigation and transport
- Environmental & Social Impact Assessment

#### 2. Project Monitoring during construction (Duration: 2 years)

- Construction and Performance Test Monitoring
- Construction progress reports on EPC Contracts
- Milestone achievement
- Performance test and Project acceptance report
- Physical completion certification
- Equator Principles verification
- Ethanol sustainability certification

#### 3. Operations phase Monitoring (Duration: 10 years)

- Annual monitoring review
- Operation and maintenance plan review



## CASE STUDY

### SUWALKI WIND FARM - POLAND



- PROJECT: SUWALKI WIND FARM
- SECTOR: Renewable Energy
- DESCRIPTION :
  - Turbines: 18 Siemens SWT – 2.3 MW
  - Towers: Tubular Steel Tower
  - Total capacity: 41.4 MW
  - 30 km of new road, grid connections, substations and cables

## CASE STUDY

### SUWALKI WIND FARM - POLAND

#### SGS Services: Owner's Representative

1. Technical due diligence  
(Duration: 6 months)
  - Design review based on technical parameters
  - Review of the EIA, permits and permissions
  - Review of the Wind reports and recalculation of the predicted energy yield

2. Owner's Engineer  
(Duration: 2 years)
  - Tender support
  - Owner's representation on-site
  - Construction supervision
  - Control of budget, schedule and quality plan
  - Site management covering HSE, Final Acceptance Testing
  - Final commissioning and handover
  - Total workload:  
> 1'200 man days





- PROJECT: Construction of a 540 MW captive power plan
- SPONSOR: Balco CPP – Korba, Chattisgarh, India
- SGS SERVICES: Project supervision & Third party inspection
- DESCRIPTION :
  - Supervision of Construction
  - Project Management Consultancy
  - Technical Inspection (Statutory or Voluntary) on site, in service
  - Vendor Surveillance, Expediting (Document Related, Physical Equipment Inspection)
  - Quality Assurance / Project Supervision of various infrastructure and power projects in various disciplines
  - Materials Testing (Civil / Mechanical Labs)
  - Review & Approval of Documents
  - Quality Surveillance
  - Daily, Weekly & Monthly Progress & Quality Reporting
  - Progress Monitoring





## WIND ENERGY TECHNOLOGY CENTRE (WETC)





# WIND ENERGY TECHNOLOGY CENTRE (WETC)



## ■ ANIMATION

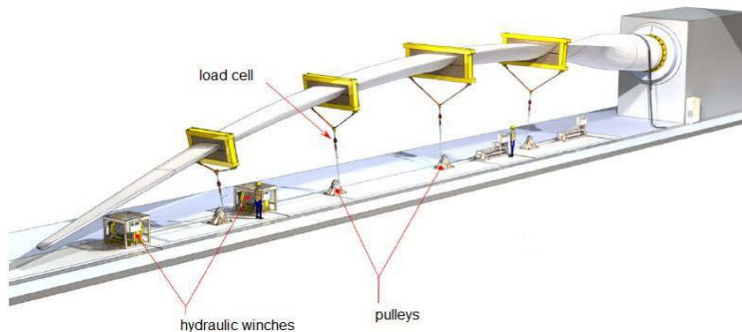
# WIND ENERGY TECHNOLOGY CENTRE SERVICES

- Eigenfrequency Test
- Static Testing
- Fatigue Testing
- Blade specific NDT
- Composite Training Courses
- Consultancy
- Composite Coupon Testing
- New Services



### ■ Blade test service

- is a high-end engineering service
- is from case to case different in duration, technical scope and quality requirements beyond the test standards
- needs to be developed together with customer before and after contracting



#### STATIC TEST

- Duration: 3-7 weeks
- Engineering: 50%
- Workshop: 50%



#### FATIGUE TEST

- Duration: 3-10 months
- Engineering: 30%
- Workshop: 70%





**SGS INVESTOR**  
**DAYS** 26 - 27 MAY 2011,  
TORONTO



**2014**  
**FOR THE**  
**COMPLETE PICTURE**

WHEN YOU NEED TO BE SURE

**SGS**